

NSW Camellia  
Research Society  
NEWSLETTER

ISSN: 2207-6883

INSIDE  
THE MAY  
ISSUE

PG. 2

President's Report

PG. 3

April meeting highlights

PG. 5

2019 Meeting schedule

PG. 6

April meeting flyer

PG. 7

Monthly Bloom Competition  
Classes \*NOTE: Change in May\*

PG. 8

What's happening in your a  
garden? Tosogetsu Ikebana

PG. 9

50<sup>th</sup> Annual Show Flyer

PG. 10

Committee contact details



BLOOMING THIS WEEK WHITE SASANQUA HEDGE, KILLARA- PHOTO ERIN FOULSHAM

APRIL MEETING  
CHAMPION BLOOMS:

OPEN (left):

Kamo honnami:  
Elizabeth Fuller

NOVICE (right):

Wilamina:  
J McGill





## PRESIDENT'S REPORT



From April and onwards we will be having a busy time leading up to the 50<sup>th</sup> Annual Show. Now is the time to let our Manager, Richie, know just how you can help him make this our best ever. It would be much easier if he knew exactly what you can do leading up to show week, during the show week and post-show with the tidy up and retrieval of the signs.

This month as we prepare for the showing season, Chris Chapman has volunteered to take us through the showing processes, He will give us his hints and secrets as to how we might emulate some of his success through the careful selection of species through to the treatment of blooms prior to travel and in setting them up for judging.

Once again, the National show will be in August. This year it will be held in Young, the "Cherry Capital" of Australia, (but it's too early for them). It will be interesting to see which blooms will be in top showing condition by then as at this stage all the camellias in our garden are running from one to two months late. I guess it will depend on the weather from now and through the beginning of winter.

We are still finding deposits in our Society Account with no idea what they are for and who made the payment. Please fill in your family name in the reference section and add a short word or two for the reason (such as subs, donation etc.). If anyone knows who deposited \$190.00 recently at Hornsby please let me know and also \$40 at Wahringah mall

I have been representing the Society at meetings of the Eryldene Trust (according to their Constitution) and by the time you receive this newsletter they will have had a planning meeting for the year ahead and their AGM will be imminent. At this stage there are no special matters to bring to your attention, however, they should be giving us a similar degree of promotion for our events as we have been giving them.

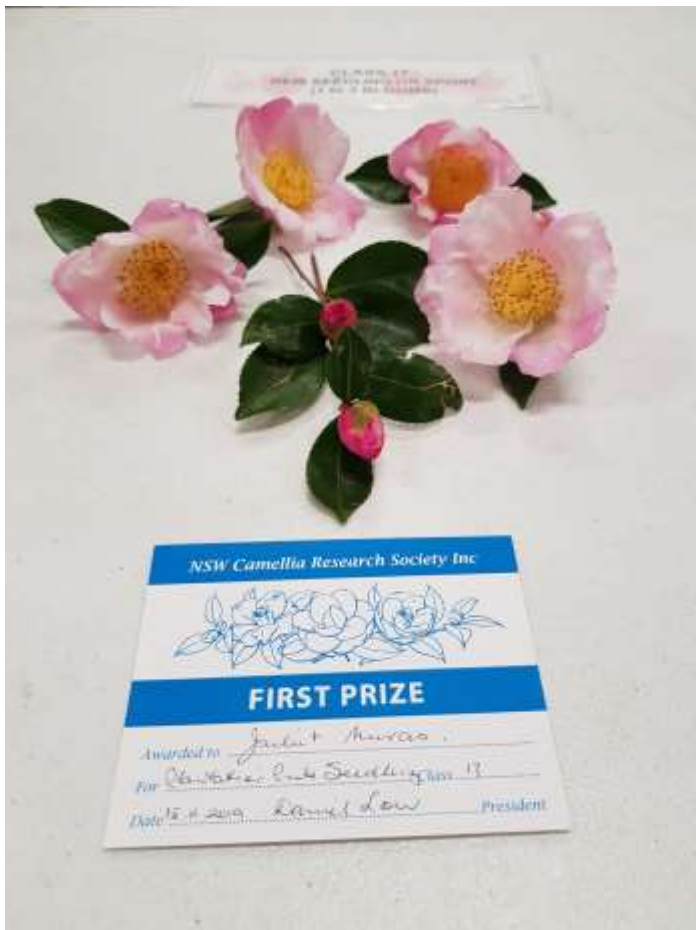
By the time of the May meeting, Carolyn and I will have been to the Willoughby Garden Club to speak to their members. Hopefully, we will encourage some to join our Society and if not, at least to come to our Show.

Daniel Low

President, NSW Camellia Research Society



## APRIL MEETING HIGHLIGHTS









## MONTHLY SCHEDULE 2019

<b>May 2019</b>	
Monday, 20 <sup>th</sup> May	<b>NSWCRS Monthly Meeting (Always 3rd Monday of Month)</b> Gordon Baptist Church, 20-22 Park Ave, Gordon 6.45pm benching for bloom competition; 7.30pm meeting start. <b>Guest speaker: Chris Chapman on showing blooms</b>
<b>June 2019</b>	
Monday, 17 <sup>th</sup> June	<b>NSWCRS Monthly Meeting (Always 3rd Monday of Month)</b> TBC – Gordon Baptist Church, 20-22 Park Ave, Gordon 6.45pm benching for bloom competition; 7.30pm meeting start
<b>July 2019</b>	
July 13 <sup>th</sup> -14 <sup>th</sup>	<b>NSWCRS 50<sup>th</sup> Annual Show</b> Ravenswood School Hall, Henry Street, Gordon
July 20 <sup>th</sup> -21 <sup>st</sup>	<b>Camellias Illawarra Annual Show (TIGS)</b>
July 22 <sup>nd</sup>	<b>NSWCRS Monthly Meeting (On the 4<sup>th</sup> Monday due to show)</b> TBC – Gordon Baptist Church, 20-22 Park Ave, Gordon 6.45pm benching for bloom competition; 7.30pm meeting start
<b>August 2019</b>	
Monday, 19 <sup>th</sup> May	<b>NSWCRS Monthly Meeting (Always 3rd Monday of Month)</b> Gordon Baptist Church, 20-22 Park Ave, Gordon 6.45pm benching for bloom competition; 7.30pm meeting start. <b>Guest speaker: TBA</b>



# APRIL NSWCRS MONTHLY MEETING

MONDAY, 20<sup>th</sup> APRIL

GORDON BAPTIST CHURCH,  
20-22 PARK AVE, GORDON

WITH

**GUEST SPEAKER**  
**CHRIS CHAPMAN**

ON

**SHOWING YOUR BLOOMS**

BENCHING OF BLOOMS COMMENCES AT 7pm

GENERAL MEETING AT 7:30pm

GUEST SPEAKER AT 7:45pm

VISITORS WELCOME

Artwork sourced from The Australian and New Zealand Camellia Research Society  
Camellia Annual December, 1957 - Paul Jones



## MONTHLY BLOOM COMPETITION CLASSES 2019

\*\*\*NOTE: CHANGE FOR MAY: ADDITION OF CLASS 1, 2 & 3\*\*\*

Class	Description	Mar	Apr	May	Jun	Jul	Aug	Sep
1	Sasanqua Single	✓	✓	✓				
2	Sasanqua Formal Double & Elegans Form	✓	✓	✓				
3	Sasanqua other forms	✓	✓	✓				
4	Sasanqua any form				✓			
5	Japonica/Hybrid Single		✓	✓	✓	✓	✓	✓
6	Japonica/Hybrid Semi-double		✓	✓	✓	✓	✓	✓
6A	Japonica / Hybrid Irregular Semi-Double		✓	✓	✓	✓	✓	✓
7	Japonica/Hybrid Elegans Form		✓	✓	✓	✓	✓	✓
8	Japonica/Hybrid Informal Double		✓	✓	✓	✓	✓	✓
9	Japonica/Hybrid Formal Double		✓	✓	✓	✓	✓	✓
10	Japonica/Hybrid Miniature		✓	✓	✓	✓	✓	✓
11	Japonica/Hybrid any form	✓						
12	Reticulatas & their hybrids		✓	✓	✓			
13	Reticulatas & their hybrids up to 130mm					✓	✓	✓
14	Reticulatas & their hybrids over 130mm					✓	✓	✓
15	Other not listed	✓	✓	✓	✓	✓	✓	✓
16	Clusters & sprays of multi-flowered species & hybrids	✓	✓	✓	✓	✓	✓	✓
17	New seedling or sport (1 to 3 blooms)	✓	✓	✓	✓	✓	✓	✓
C1	Collection: Sasanqua, any form, 3 blooms	✓	✓					
C2	Collection: Any camellia, any form, 3 blooms		✓	✓	✓	✓	✓	✓

### Classes

Classes 1 to 15: one bloom, with a maximum of 2 attached leaves

Classes C1 & C2: a collection of 3 blooms, with a maximum of 2 attached leaves

### Competition

A 'Novice' exhibitor has not won the annual 'Novice' championship, nor have they scored 20 points in a monthly 'Open' competition. The competition year starts in March, and a 'Novice' in March remains so to the end of that year. A bloom exhibited by a 'Novice' can win in 'Open' classes.

### Points

'Open' and 'Novice' Classes 1 to 16: 1<sup>st</sup> = 3 points; 2<sup>nd</sup> = 2 points; 3<sup>rd</sup> = 1 point (if required)

'Open' and 'Novice' Collections Classes C1 to C2: 1<sup>st</sup> = 6 points; 2<sup>nd</sup> = 4 points; 3<sup>rd</sup> = 1 point (if required)

'Open' and 'Novice' Champion bloom (from the winning blooms) Extra 3 points.





WHAT'S HAPPENING IN YOUR GARDEN?  
A VISIT TO SOGETSU IKEBANA DISPLAY AT THE CALYX AT THE ROYAL BOTANICAL  
GARDENS.



Photo credit: D & C Low





NSW Camellia Research Society Inc Presents its

# 50th Annual Camellia Show



At Ravenswood School for Girls,  
Henry Street, Gordon

Saturday 13TH July 2019

1.30pm to 4.30pm

and

Sunday 14TH July 2019

10am to 4pm

Official Opening at 2.30pm on Saturday by

Professor The Honorable

Dame Marie Bashir AD CVO

Patron of the NSW Camellia Research Society

Occasional Address - His Excellency, Keizo Takewaka, Consul General of Japan

**Admission:** Adults - \$5 (includes a Lucky Door Prize) School children - Free

#### Featuring:

- Spectacular Display of Beautiful Camellias
- "Camellia Grove" Camellias for Sale and Camellia Plant Raffle Daily
- Beautiful Displays of Sogetsu Ikebana; Bonsai; Camellia Artifacts
- "Cut Above" Garden Tools for Sale
- Bring Your Camellias For Identification or Help with Pests and Diseases
- Potting Up and Pruning Demonstrations on Sunday Afternoon
- Light Refreshments for Sale

**Enquiries:** [nswcamellias@hotmail.com](mailto:nswcamellias@hotmail.com) or 9988 3280 (Daniel Low, President)

The NSW Camellia Research Society meets at Gordon  
Baptist Church the third Monday of each month  
(February to October). Visitors are most welcome.

[www.camelliasnsw.org.au](http://www.camelliasnsw.org.au)





## NSWCRS COMMITTEE CONTACT DETAILS

<b>Patron:</b>	Her Excellency Professor The Honourable Dame Marie Bashir AD CVO	
<b>President:</b>	<i>Daniel Low</i>	M: 0403524305 E: d_low48@hotmail.com
<b>Vice President:</b>	<i>Vacant</i>	H: E:
<b>Secretary:</b>	Helen Wallace	M: E:helen_wallace@optusnet.com.au
<b>Treasurer:</b>	Julie Hood	H: 94118569 E: <a href="mailto:jhoodmazlin@gmail.com">jhoodmazlin@gmail.com</a>
<b>Public Officer:</b>	Richie Griffiths	
<b>Newsletter Editor:</b>	Erin Foulsham	E:erinfoulsham@gmail.com
<b>Librarian:</b>	Bill Fleming	E:wffleming@primusononline.com.au
<b>Committee:</b>	<i>Daniel Low (President)</i>	Margaret Levick
	<i>Vacant (Vice President)</i>	Juliet Muras
	<i>Julie Hood (Treasurer)</i>	Erin Foulsham ( <i>newsletter editor</i> )
	<i>Helen Wallace (Secretary)</i>	Wendy Sadler-Moyes ( <i>Immediate Past President</i> )
	<i>Richie Griffiths (Public Officer/Show manager)</i>	Carolyn Low
<b>National Councillors:</b>	TBC	
<b>ABN:</b>	16 873 158 367	
<b>Incorporation No.:</b>	Y17693-47	



Manufacturers of biological  fertilisers



## MEMBERSHIP FEES 2019

Membership fees for 2019 were **due on 1st November 2018**. If you have not already done so, kindly make arrangements to renew your annual membership. The following table outlines membership fees:

Membership type	Emailed newsletter*	Black & white posted newsletter**
Single	\$30	\$60
Household	\$40	\$70
Life members	Free	\$30
*Included as part of all memberships		
**An additional fee of \$30 covers expenses of printing & postage		

**Payments Methods: Via Internet Banking OR Via Direct Deposit over the counter at a Commonwealth Bank**

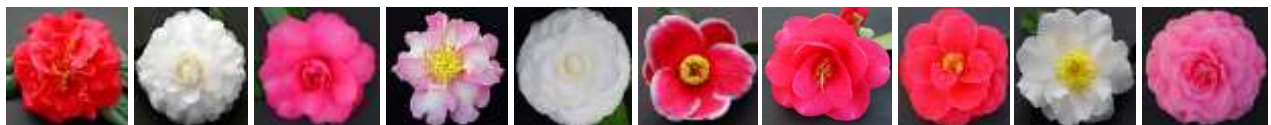
Account Name: NSWCRS

BSB: 062247 Account Number: 0090 0966

Put as a Reference: "RenewalYourSurname"



ESTABLISHED 1939



### OUR NURSERY

8 Cattai Ridge Road

Glenorie NSW 2157

Australia

Phone: (02) 9652 1200

Fax: (02) 9652 2740

### NURSERY TRADING HOURS

9am-4pm

OPEN 7 DAYS

Browse our website at:

<http://www.camelliagrove.com.au>







- Stroll through the beautiful camellia garden
- Tour the house, and absorb early twentieth century history, culture and architecture
- Take Sunday Afternoon Tea as served by Mrs Waterhouse. Bookings recommended

# ENJOY ERYLDENE THROUGHOUT THE YEAR IN 2019



**Eryldene is open from 10am to 4pm on:**

**April 13-14**

Celebrate our 105th Birthday with FREE ENTRY  
View parts of the Collection not usually on display

**May 11-12**

Mothers Day Weekend, celebratory teas served from  
11.00am both days, bookings essential

**June 8-9 and July 13-14**

When most camellias are at their best

**August 10-11 and September 14-15**

For late camellias and azaleas

**November 23-24**

Eryldene Christmas Fair with over 50 unique stalls

Eryldene is also available for private booked tours,  
venue hire for weddings, events, and photography

**Book at [www.ticketebo.com.au/eryldene](http://www.ticketebo.com.au/eryldene)**



**ERYLDENE HISTORIC HOUSE AND GARDEN**

17 McIntosh Street, Gordon, NSW 2072  
[eryldene@eryldene.org.au](mailto:eryldene@eryldene.org.au) 02 9498 2271  
[www.eryldene.org.au](http://www.eryldene.org.au)